



AHSANT™

2020 PRODUCT PRESENTATION

BINS CATALOGUE

Design and manufacture for hotels, resorts and restaurants

AHSANTGLOBAL.COM

AHSANT AWARDS

2017 Best Luxury Hotel Supplies Company

UAE Business Awards

2015 Best Hotel Partner

Middle East Hotel Awards

UAE Business

A w a r d s 2 0 1 7

mea



MIDDLE EAST

hotel awards



OUR PROJECTS FROM THE PANDEMIC TO TODAY

Al Seef Hotel Jumeirah
Burj Al Arab
Caesars Palace & Caesars Resort Bluewaters
Chris Garrod Global Ltd.
Cairncross Martin
Dubai Hills Golf Club
Dubai Marina Yacht Club
Ecos Hotel
Emaar Properties PJSC
Fairmont Palm Hotel
Four Season Bahrain
Four Seasons Hotel Jumeirah
Four Season Hotel Saadiyat Island
Four Seasons Tunis
Grand Plaza Movenpick
Hotel L'Archipel
Intercontinental Hotels Maldives
Jebel Ali Lake View & Ocean View
Jumeirah Al Wathba
JW Marriott Muscat
Le Meridien Hotel Jeddah
One the Palm Hotel
Rixos Premium JBR
Rixos Saadiyat Island Resort
Rosewood Abu Dhabi
Rove Hotels
Taj Hotel Dubai

The Address Beach Resort
The Address Boulevard
The Address Downtown
The Address Dubai Mall
The Address Dubai Marina
The Address Egypt
The Address Fountain Views
The Address Fujairah Hotel + Resort
The Address Montgomerie Dubai
The Address Sky Views
The First Group
The Galliard Restaurant & Cafe
The House Hotel Jeddah
The Oberoi Beach Resort Al Zorah UAE
The Oberoi Dubai
The OPUS Hotel LLC
The Palace Downtown Dubai
The Parker Company
The Westin Maldives Miriandhoo Resort
The 8 Palm Hotel
Veligandu Island Resort Maldives
Vida Bahrain
Vida Creek Harbour
Vida Downtown Dubai
Vida The Hills
Vida Umm Al Quwain
W Hotels

Recent Notable Projects in the Middle East

Pre-opening of VIDA Creek Harbour – Guestroom and Bathroom Accessories
Pre-opening of VIDA The Hills – Guestroom and Bathroom Accessories
Pre-opening of Vida Umm Al Quwain – Guestroom and Bathroom Accessories
Pre-opening of Caesar’s Palace – F&B Leather Menus
Pre-opening of Caesar’s Resorts – F&B Leather Menus
Pre-opening of W Hotel - F&B Leather Menus and PA Accessories
Pre-opening of The Address Fountain View - Guestroom & PA Accessories
Pre-opening of InterContinental Hotels Maldives – Guestroom Leatherware Accessories
Pre-opening of Westin Maldives – F&B Leather Menus
Pre-opening of Jebel Ali Lake View – Guestroom Leatherware
Pre-opening of Jumeirah Al Wathba - Housekeeping & PA Accessories
Pre-opening of Rove Hotel in Marina at the Park
Four Seasons Hotel Jumeirah - F&B Leather Menus & PA Accessories
Four Seasons Hotel Bahrain - Guestroom Leatherware & PA Accessories
Four Seasons Hotel DIFC - F&B Leather Menus
Veligandu Island Maldives - Guestroom Accessories
Pre-opening Address Beach Resort PA Bathroom Accessories
Pre-opening Address Fujairah Hotel & Resorts Bathroom Guestroom & PA Accessories
Pre-opening Vida Bahrain Bathroom Wall Brackets & PA Accessories
Pre-opening The 8 Palm Hotel Guestroom & Bathroom Accessories
Pre-opening The House Hotel Jeddah Guestroom & Bathroom Accessories
Hotel L' Archipel Bathroom Accessories
Rove Citywalk Bathroom Accessories & Indoor Bins
ROVE Expo Bathroom Accessories

This proposal is strictly confidential and any usage, distribution or reproduction of our design materials require written consent before use.

The image depicts a luxurious, multi-level interior space, likely a hotel lobby or grand hall. The most prominent feature is a massive, multi-tiered chandelier with intricate gold and crystal details, hanging from a ceiling with black and white striped patterns. The space is supported by large, fluted gold columns. In the foreground, a central fountain with multiple jets of water is set within a dark, geometric base. The background shows a seating area with ornate sofas and armchairs, and large arched windows with decorative frames. The overall aesthetic is opulent and traditional, characteristic of Arabesque architecture.

ARABESQUE

TAJ 1

ARABESQUE

"Taj" in Arabic means "crown". Modern meets tradition with the accent of the mashrabiya pattern, an element of traditional Arabic architecture used since the Middle Ages up to the mid-20th century. The pattern brings a touch of tradition amidst of today's modernism.



Material: Wood and Metal (detail) + Steel liner

Dimensions: 30 cm (LW) x 70 cm (H)

Available in color: Natural wood shade

TAJ 2

ARABESQUE

"Taj" in Arabic means "crown". Modern meets tradition with the accent of the mashrabiya pattern, an element of traditional Arabic architecture used since the Middle Ages up to the mid-20th century. The pattern brings a touch of tradition amidst of today's modernism.



Material: Wood and Metal (detail) + Steel liner

Dimensions: 30 cm (LW) x 70 cm (H)

Available in color: Gray, Custom

IKLEEL 1

ARABESQUE

"Ikleel" in Arabic means "garland". Subtle mashrabiya pattern used as detail to accentuate the body's smooth, plain, and tapered formation. An elegant fusion between metal cut-outs and a clean body just gets it right with an option of using either wood or resin with metal.



Material: Wood and Metal (detail) + Steel liner

Dimensions: 30 cm (LW) x 70 cm (H)

Available in color: Natural wood shade

IKLEEL 2

ARABESQUE

"Ikleel" in Arabic means "garland". Subtle mashrabiya pattern used as detail to accentuate the body's smooth, plain, and tapered formation. An elegant fusion between metal cut-outs and a clean body just gets it right with an option of using either wood or resin with metal.



Material: Wood and Metal (detail) + Steel liner

Dimensions: 30 cm (LW) x 70 cm (H)

Available in color: Gray, Custom

MAZE

ARABESQUE

This quad-wooden bin inlaid with Mashrabiya pattern is suitable whether be it indoors or outdoors. The cut-through pattern reveals the underneath metal material liner. Thus the combination of both gives the bin an interesting overall contrast.



Material: Resin or wood + Steel liner

Dimensions: 30 cm (LW) x 70 cm (H)

Available in color: White, natural wood shade

SEASHINE

ARABESQUE

Water meets land, the mother of pearl shell inlaid on the wooden base makes a perfect combination in harmonizing nature's best. The bin would highly accentuate both traditional and modern interior with its honesty and neutrality.



Material: Wood and capiz inlay + Steel liner

Dimensions: 30 cm (LW) x 70 cm (H)

Available in color: Natural wood shade, custom

A grand, ornate interior space, likely a lobby or grand hall, featuring classical architecture. The room is characterized by tall, white, fluted columns with ornate, gilded capitals. A large, multi-tiered chandelier hangs from the ceiling, casting a warm glow. The floor is polished and reflects the light, with a large, intricate mosaic or tile design in the foreground. In the background, there are tables and chairs, suggesting a seating area. The overall atmosphere is one of elegance and grandeur.

EUROPEAN

ROMA

EUROPEAN

Evoking the bare simplicity of natural stone finish, the bin perfectly blends in every subdued modern and themed environment, whether be it interior or exterior, while the pattern engraved in the body sets the tone for a Victorian atmosphere.



Material: Natural Stone and Metal (detail) + Steel liner

Dimensions: 30 cm (LW) x 70 cm (H)

Available in color: Sandstone

Decorative Italian Figures



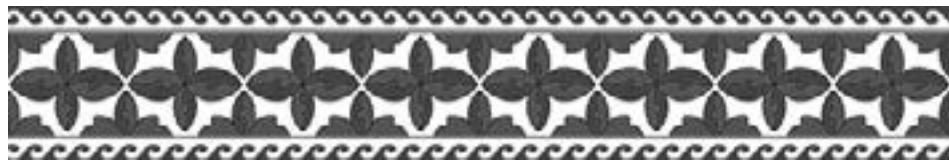
28D V1



28E V1



28F V1



29A V1



29B V1



42B V1

A wide-angle photograph of a grand, opulent hotel lobby. The ceiling is a masterpiece of modern design, featuring a large, multi-tiered circular recessed area with a textured, golden interior. A massive, multi-tiered crystal chandelier hangs from the center of this recessed area, casting a warm, golden glow. The ceiling is further embellished with recessed lighting and decorative gold-colored trim. The floor is made of highly polished, light-colored stone tiles that reflect the ambient light. In the center of the lobby, a large, circular rug with a complex, colorful geometric pattern is laid out. Several large, classical-style columns with fluted shafts and decorative capitals support the ceiling. To the left, a dark wooden table holds a small potted tree and some decorative items. The overall atmosphere is one of luxury and elegance.

LUXURIOUS-GRAND-ELEGANT

ALEXANDER 1

LUXURIOUS-GRAND-ELEGANT

Golden, grand, and glamorous, this bin gets your game of grandeur on the go. Its tapered body and sexy stance just lifts the bar on the world of ash tray. Whether the interior maybe decorated, still, the bin outstands and blends itself in.



Material: Natural Stone or Metal (detail) + Steel liner

Dimensions: 30 cm (LW) x 70 cm (H)

Available in color: Gold, custom

ALEXANDER 2

LUXURIOUS-GRAND-ELEGANT

Golden, grand, and glamorous, this bin gets your game of grandeur on the go. Its tapered body and sexy stance just lifts the bar on the world of ash tray. Whether the interior maybe decorated, still, the bin outstands and blends itself in.



Material: Natural Stone or Metal (detail) + Steel liner

Dimensions: 30 cm (LW) x 70 cm (H)

Available in color: Gold, custom

STIK-O

LUXURIOUS-GRAND-ELEGANT

Cylindrical bin with a smooth curving-in inner body resonates natural sexiness.

The two tone material gives perfect contrast to adapt accordingly into the interior's ambiance. This design is flexible enough to fit the range.



Material: Metal (detail) + Steel liner

Dimensions: 30 cm (LW) x 70 cm (H)

Available in color: Gold, custom

A photograph of a modern, avant-garde interior space. The scene is dominated by a large, glowing, spherical chandelier with intricate, crystalline patterns, suspended from a dark ceiling. Below it, a reception desk with a white, illuminated counter and a dark base is visible. Several people are standing near the desk. In the foreground, a large, dark, abstract sculpture with sharp, angular forms is prominently displayed. The floor is highly reflective, mirroring the lights and the sculpture. The overall atmosphere is sophisticated and contemporary.

MODERN AVANT-GARDE

HUGO

MODERN AVANT-GARDE

A modern and sculptural bin accentuated by its organic form, bare simplicity and elegance that is purposed to fit on a variety of contemporary interior. Available in neutral colors to perfectly compromise the modern ambience.



Material: GRC + Steel liner
Dimensions: 30 cm (LW) x 70 cm (H)
Available in color: Gray, custom

TINA TURNER

MODERN AVANT-GARDE

Sexiness and elegance combined give birth to a bespoke design. If you are fond of a bin with its own twist and turn, the Tina Turner ash tray bin model offers its whole package; outshining itself and exceeding the norm.



Note: This model would only be feasible as an ash tray bin

Material: Resin + Steel liner

Dimensions: 30 cm (LW) x 70 cm (H)

Available in color: Gray, custom

ART

MODERN AVANT-GARDE

The tapered cylindrical base bin with smudged effect on resin as a primary base of the bin, combined with metal liner detail, and an interesting cut-out pattern on the bin's body itself results to a peculiar, yet an interesting decorative bin.



Material: Stonecast and Metal (detail) + Steel liner

Dimensions: 30 cm (LW) x 70 cm (H)

Available in color: Gray, Silver

A photograph of a modern, minimalist interior space. The room features a large, polished stone floor that reflects the ambient light. In the center, a large white rectangular box contains the text "MODERN-MINIMAL" in a bold, black, sans-serif font. The background shows a reception desk with a glowing base, a dark sofa, and a coffee table. The walls are composed of large, light-colored panels with recessed lighting along the top and bottom edges, creating a warm and sophisticated atmosphere.

MODERN-MINIMAL

WEDGE

MODERN-MINIMAL-CONTEMPORARY

The bins push back function offers its convenience to the user. With its tapered top, it sets itself out of conventional, yet revealing its purpose to the user.

A perfect resonance of the principle of Functionalism, "Form Follows Function."

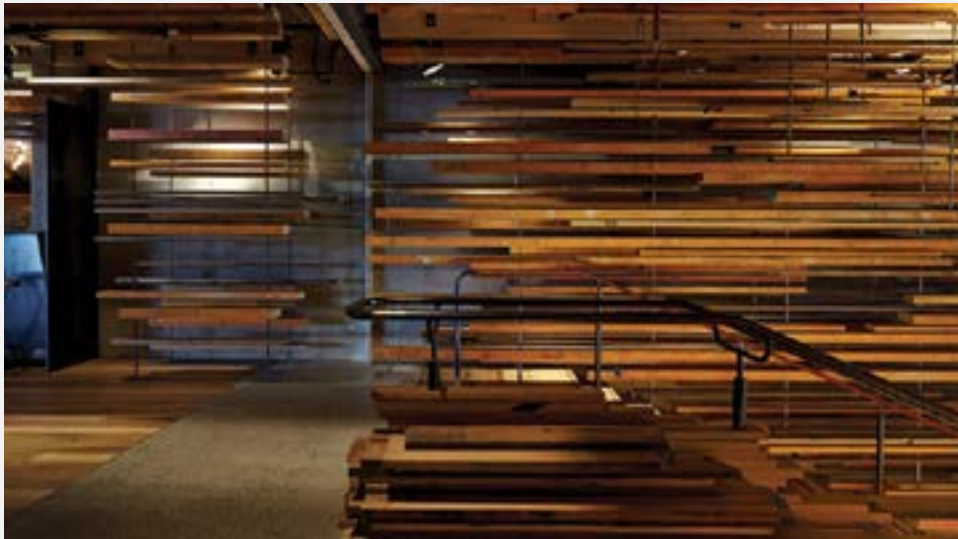


Material: Wood + Steel liner
Dimensions: 30 cm (LW) x 70 cm (H)
Available in color: Gray

ROBINHOOD

MODERN-MINIMAL-CONTEMPORARY

The cascading panels combines geometry and natural wood material to complement a timber based interior. The enclosed metal bin give contrast with the natural tint of wood. As a result, a well contrasted bin.



Material: Wood + Metal + Steel liner

Dimensions: 30 cm (LW) x 70 cm (H)

Available in color: Brown, Silver

CYLINDRICAL BIN

MODERN-MINIMAL-CONTEMPORARY

Evoking the bare simplicity of natural stone finish, the bin perfectly blends in every subdued modern and industrial atmosphere, whether be it interior or exterior. With natural stone being the primary material, it seamlessly strikes the balance between natural and modern materials.



Material: Natural Stone + Steel liner
Dimensions: 30 cm (LW) x 70 cm (H)
Available in color: Brown, Silver

CONTACT US

dindo.suguitan@ahsantglobal.com

maria.pelaez@ahsantglobal.com

iman@ahsantglobal.com

+971(55) 4432775 | +971(55) 8824530

+971(55) 2179986 | +971(4) 4357214

AHSANTGLOBAL.COM

AHSANTGLOBAL creates premium hotel supplies and specialized gifts.

Shop no. 14 Bldg. R-16, France Cluster, Dubai, International City, UAE

P.O. Box 3155 Dubai